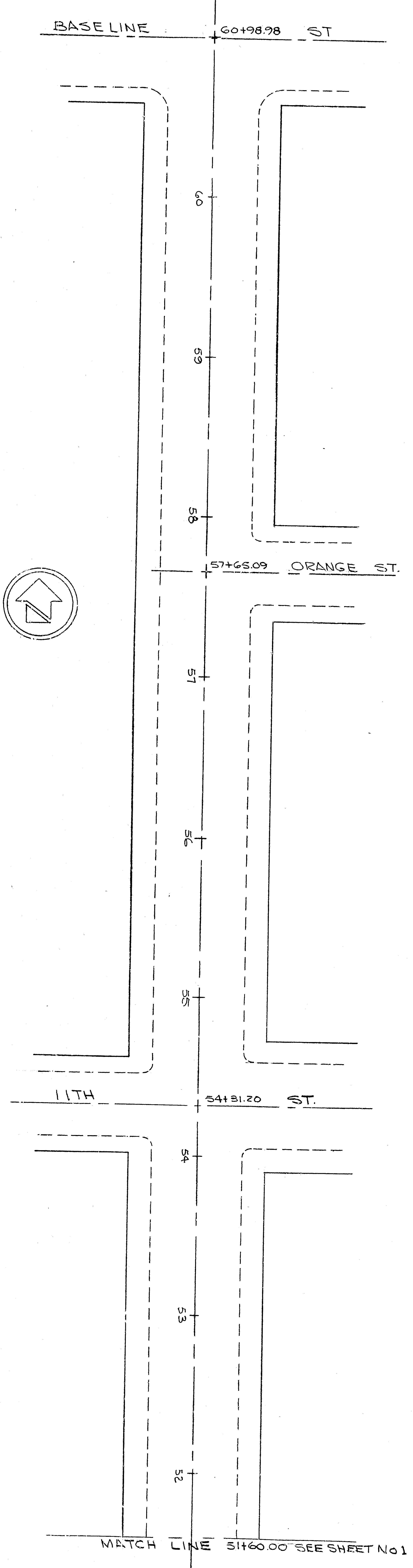
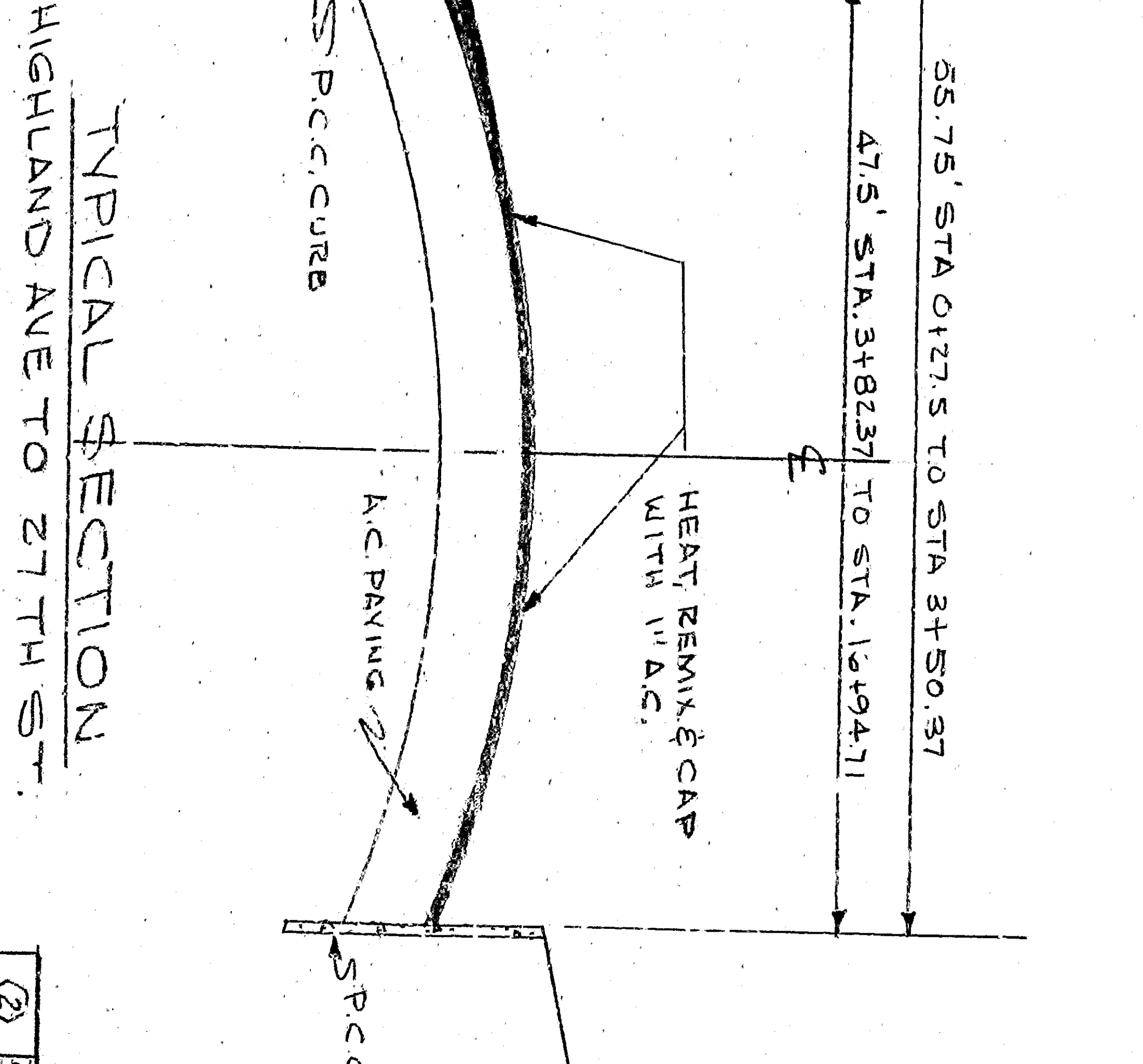
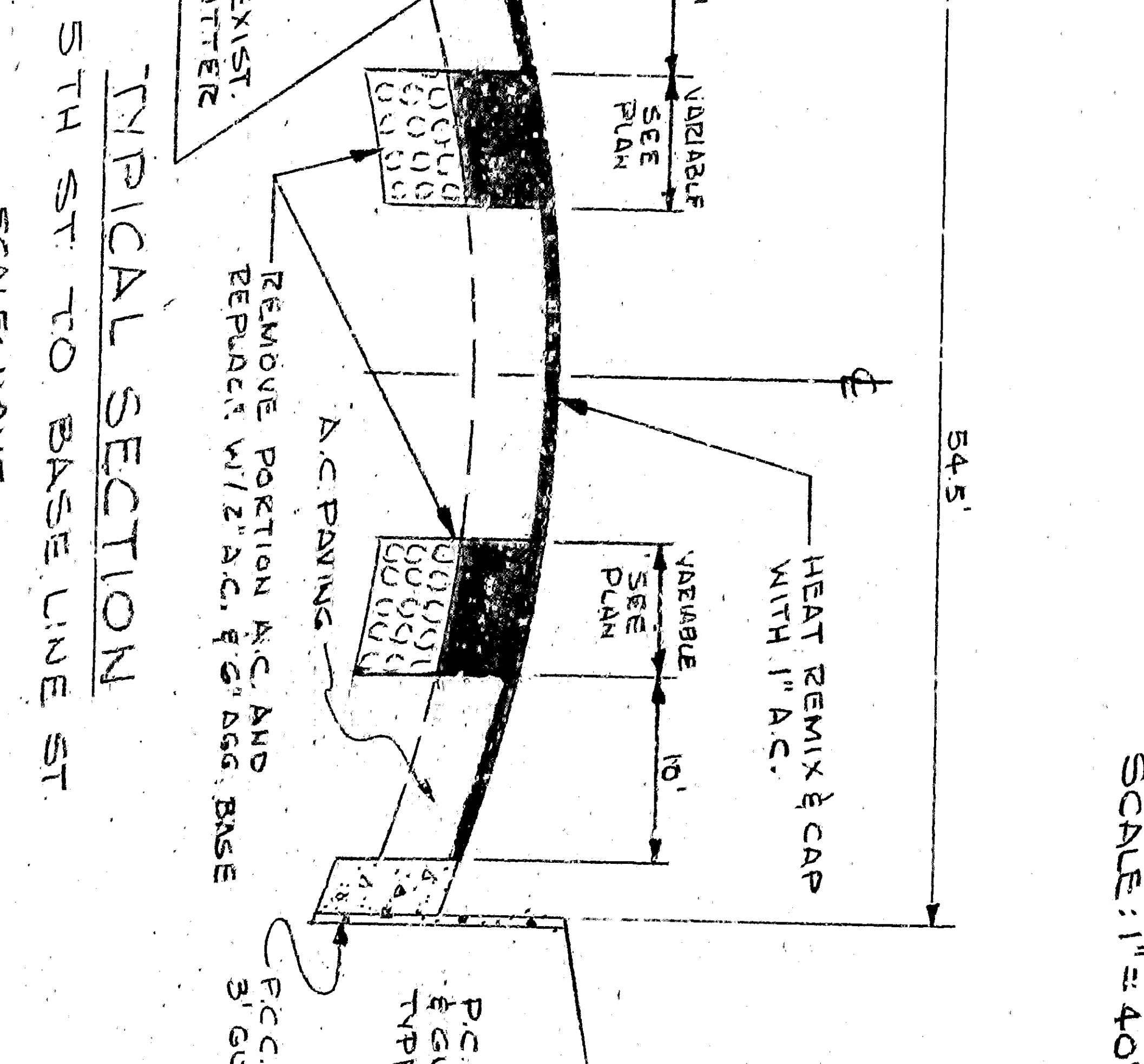
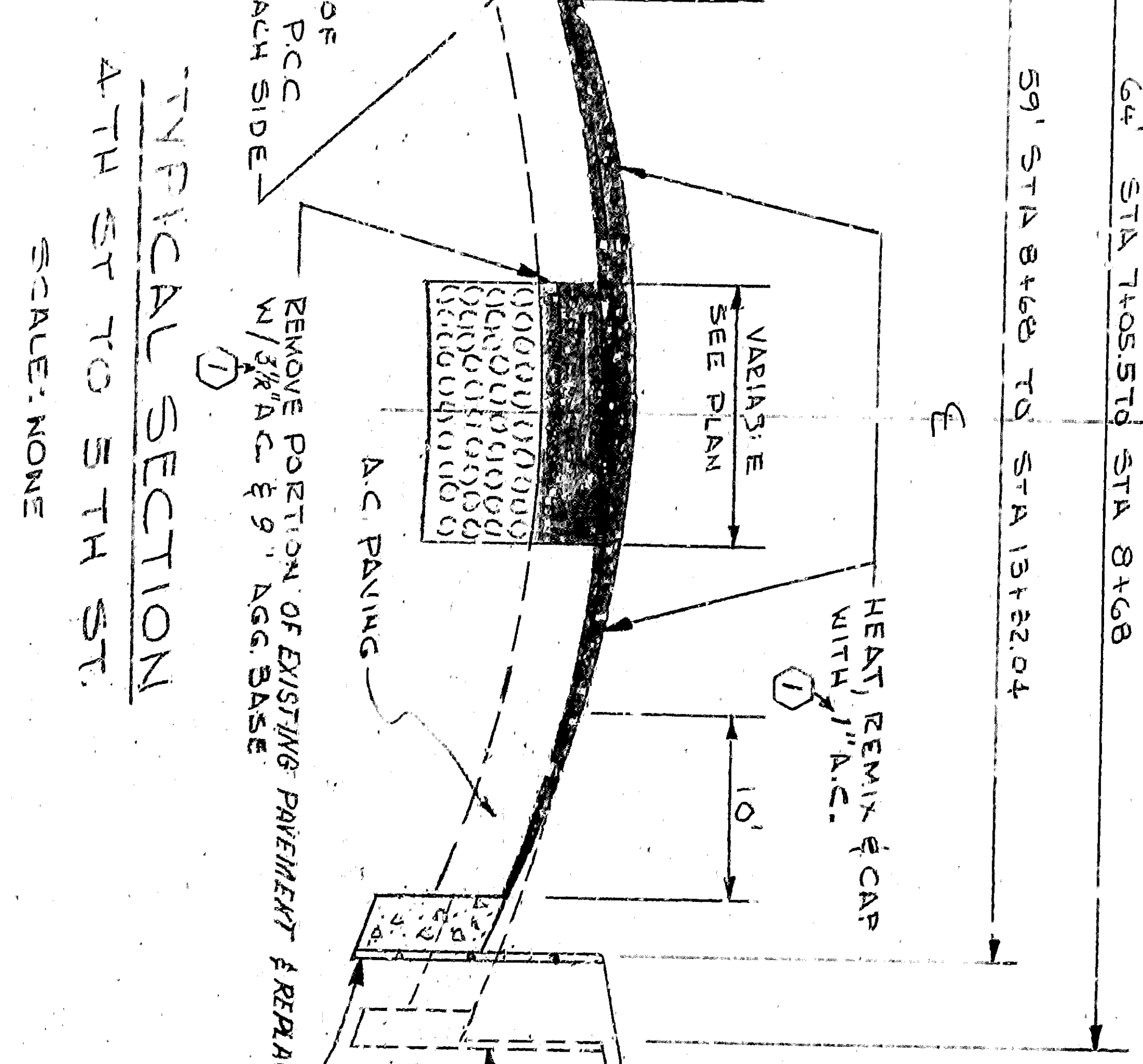
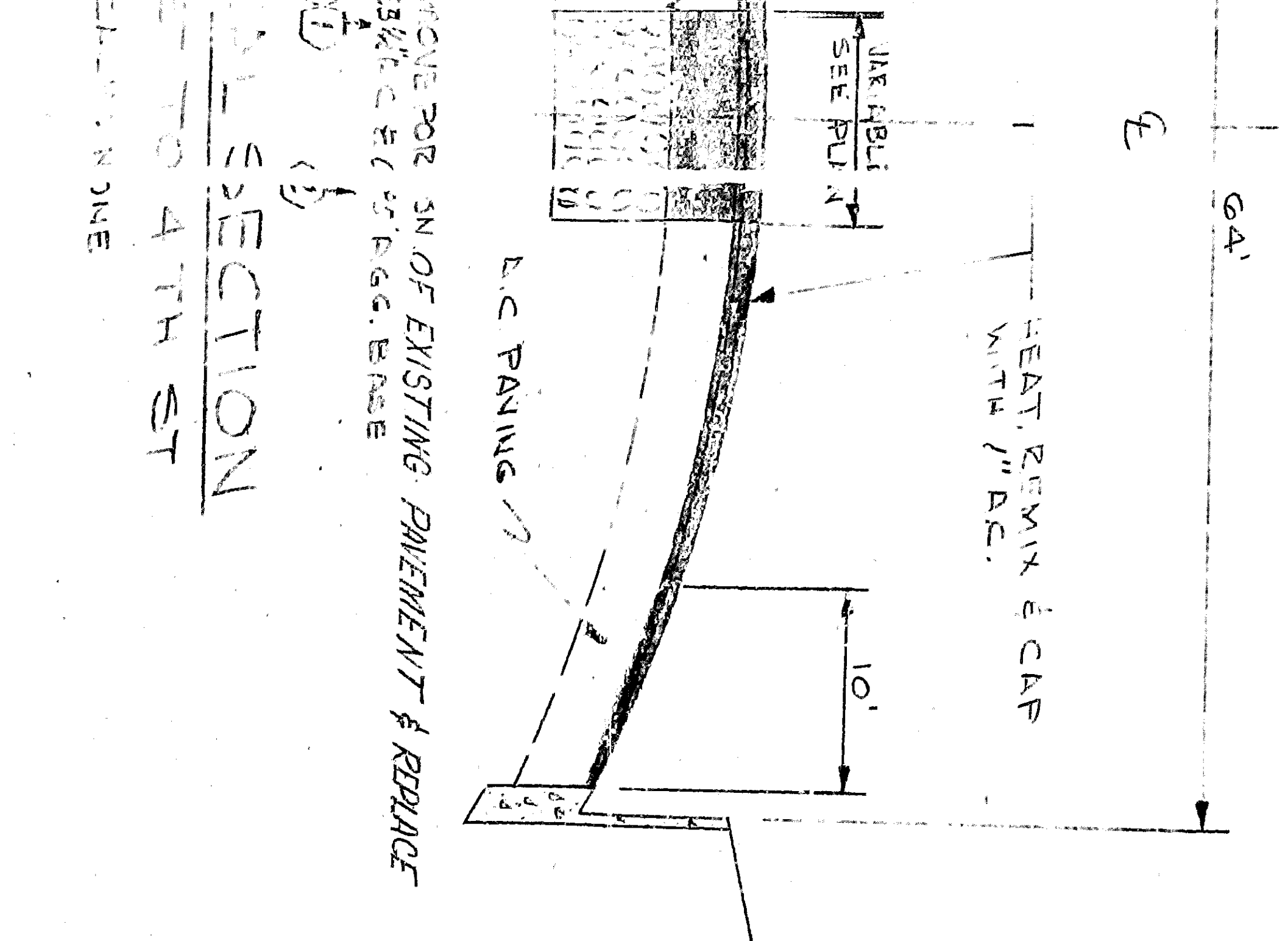


PLAN
SCALE: 1"=40'



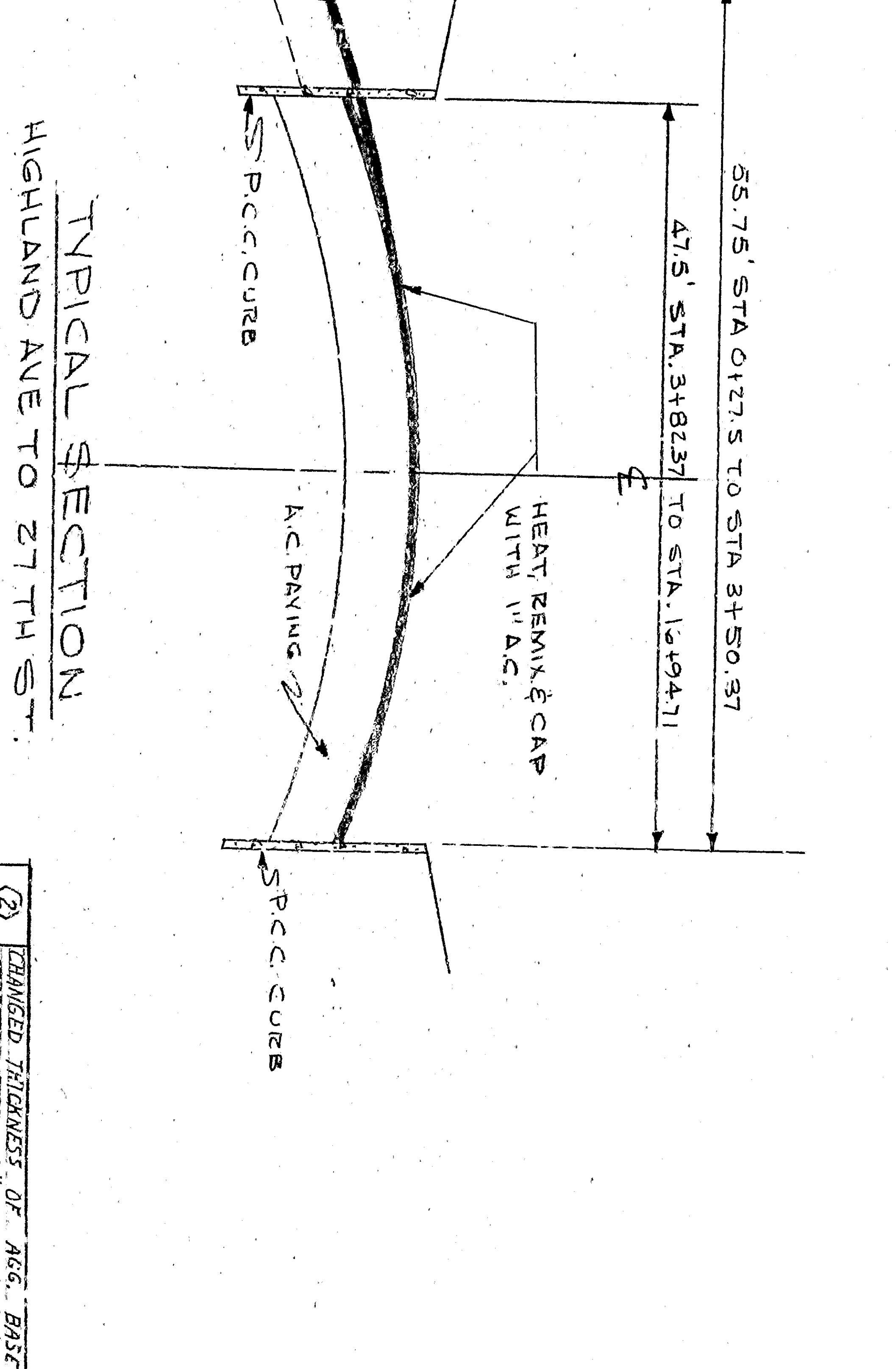
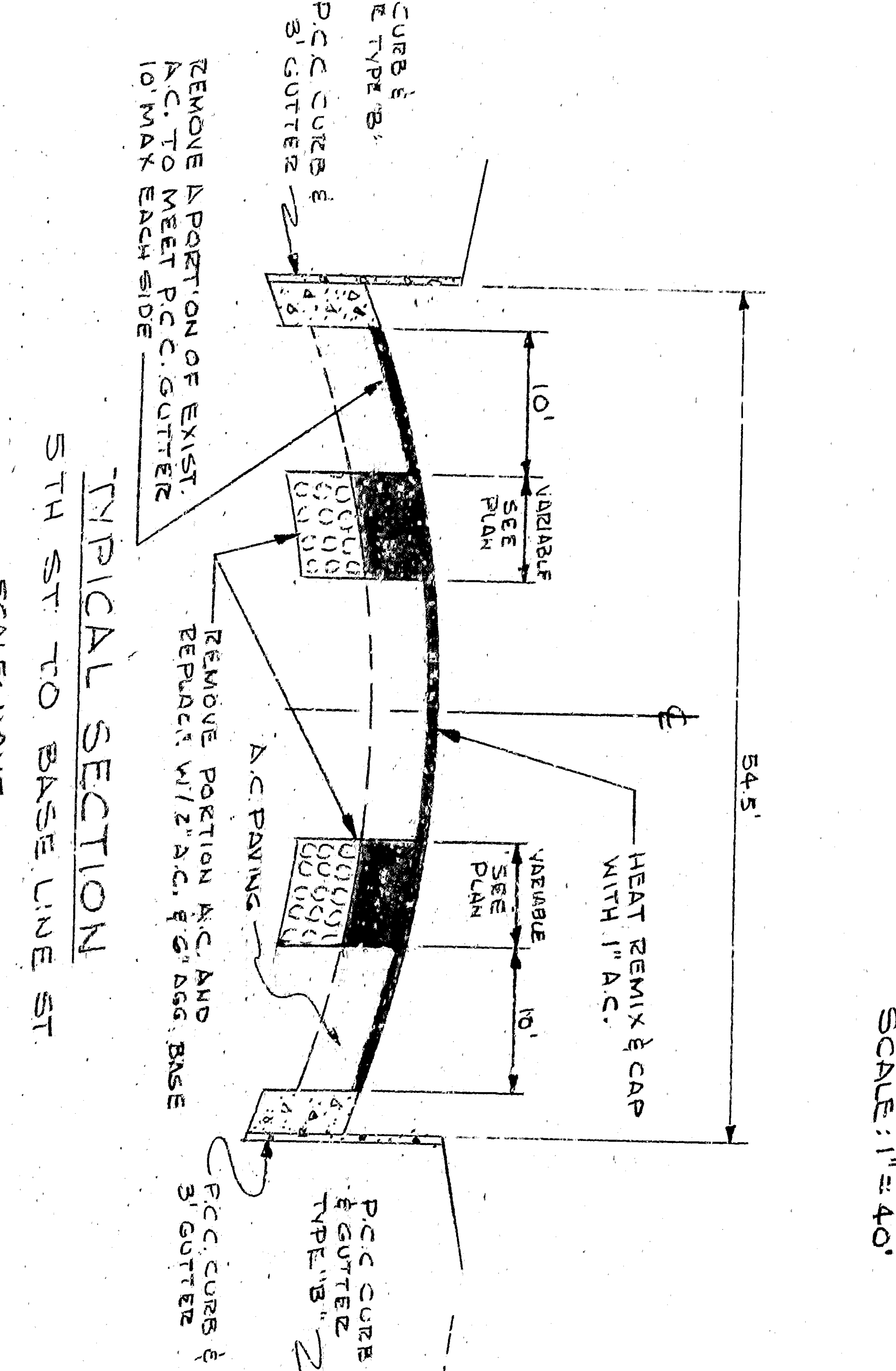
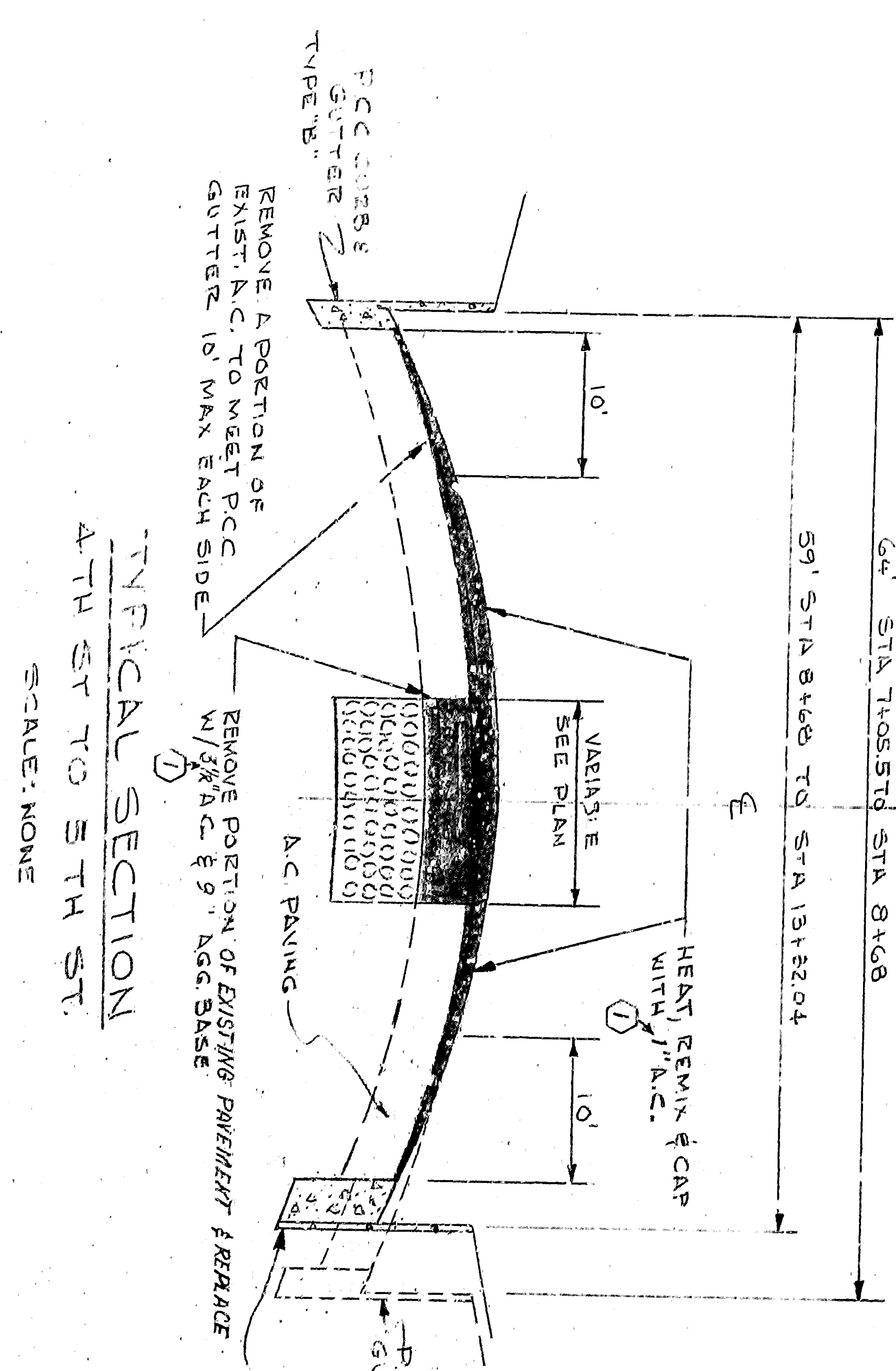
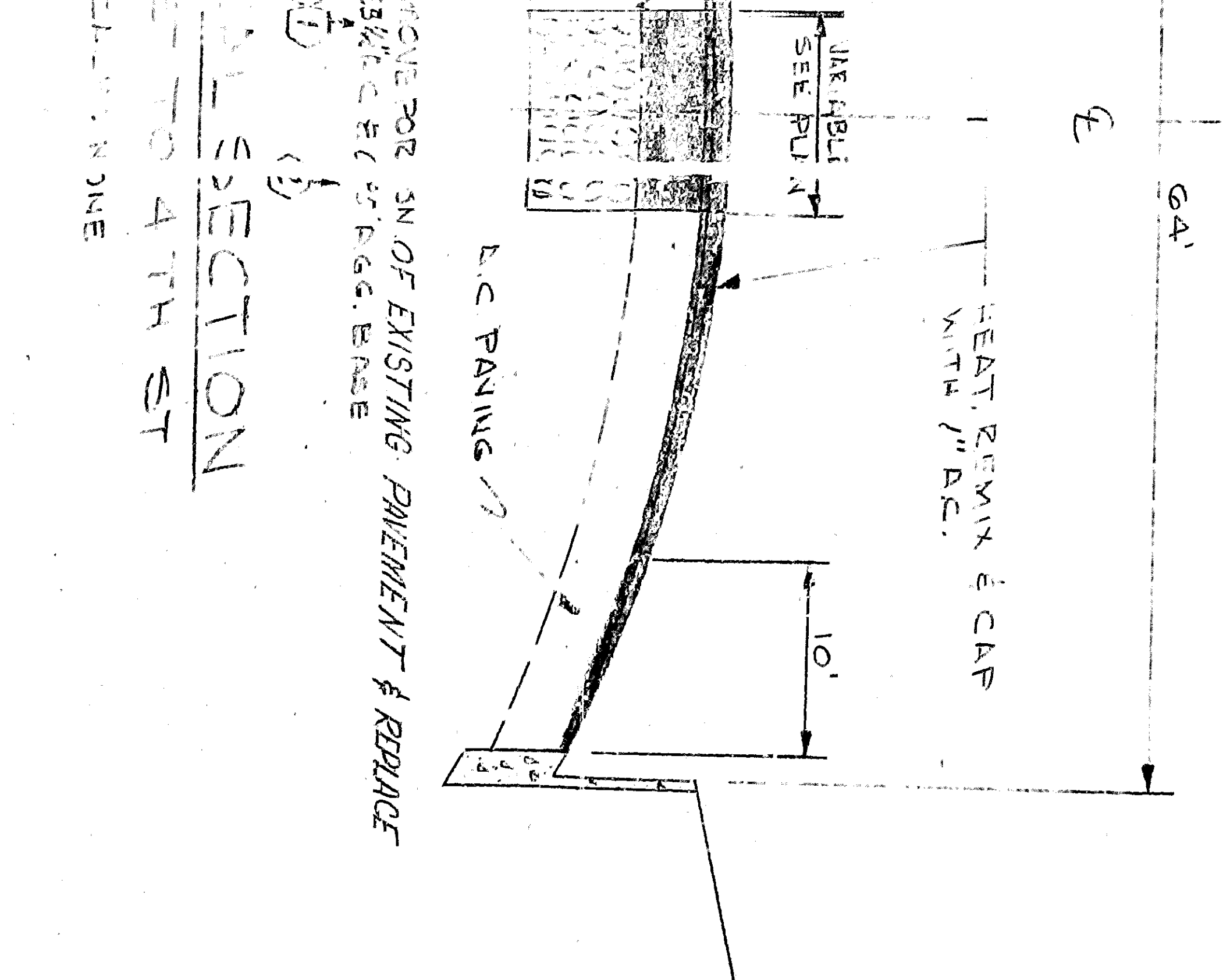
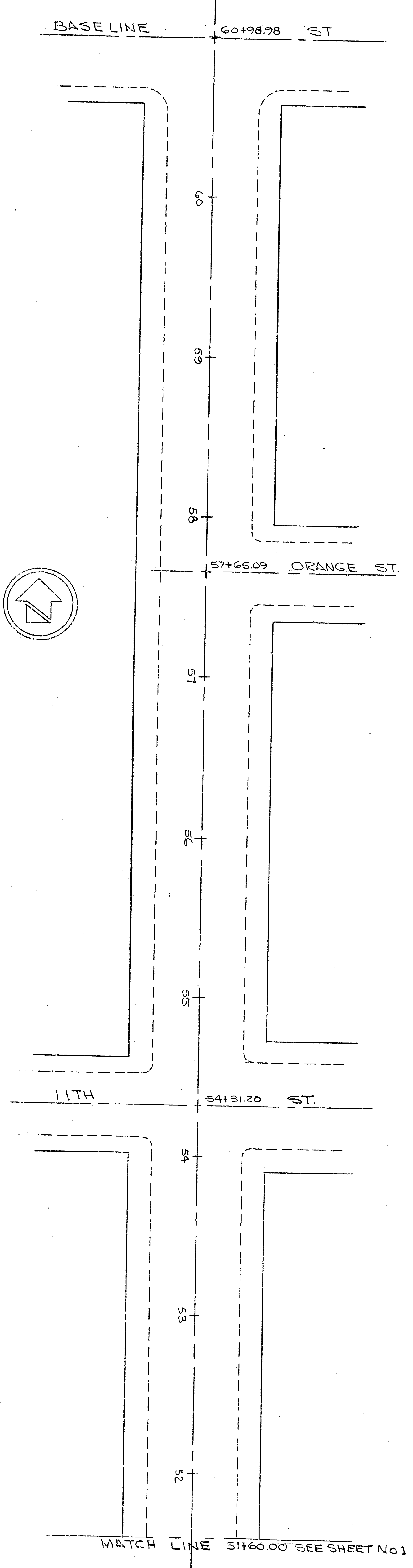
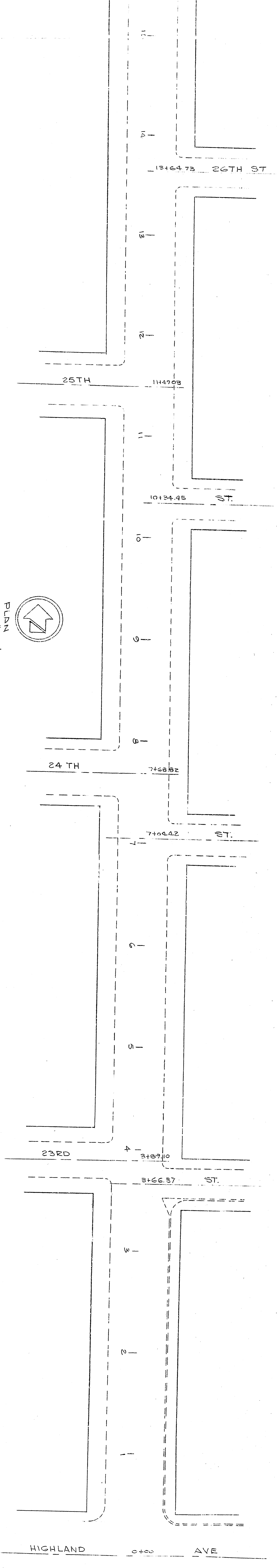
PLAN
SCALE: 1"=40'



GENERAL NOTES:
1. All Work Emphasized On This Plan Shall Be Done In Conformity With Applicable Provisions Of Standard Specifications No. 2271 And Standard Details No. 2271 On File In The Office Of The City Engineer.

APPROVED	DATE	BY
<i>[Signature]</i>	1/15/45	W.C.
REVISION	DATE	BY
1. CHANGED THE SLOPE FROM 3% TO 5% FROM 2+00 TO 5+00	1/15/45	W.C.
2. CHANGED THE SLOPE FROM 5% TO 3% FROM 5+00 TO 11+00	1/15/45	W.C.

DEPARTMENT OF ENGINEERING
CITY OF SAN BERNARDINO
IMPROVEMENT PLAN
ARROWHEAD AVE FROM Q OF 3RD ST. TO Q OF BASE LINE ST. AND FROM Q OF HIGHLAND AVE TO Q OF 27TH ST. STREET REPAIR PAVING.



GENERAL NOTES:
1. All Work Emphasized On This Plan Shall Be Done In Conformity With Applicable Provisions Of Standard Specifications No. 2271 And Standard Details No. 1021 ON FILE IN THE OFFICE OF THE CITY ENGINEER.

APPROVED	DATE	BY
<i>[Signature]</i>	2/11/66	W.S.
DEPARTMENT OF ENGINEERING		
CITY OF SAN BERNARDINO		
IMPROVEMENT PLAN		
ARROWHEAD AVE FROM Q OF 3RD ST. TO Q OF BASE LINE ST. AND FROM Q OF HIGHLAND AVE TO Q OF 27TH ST. STREET REPAIR PAVING.		
DRAWING NO. 2493	DESIGNED BY BILL	CHECKED BY W.S.
SHEET 2 OF 2	RECOMMENDED	
2 SHEETS		